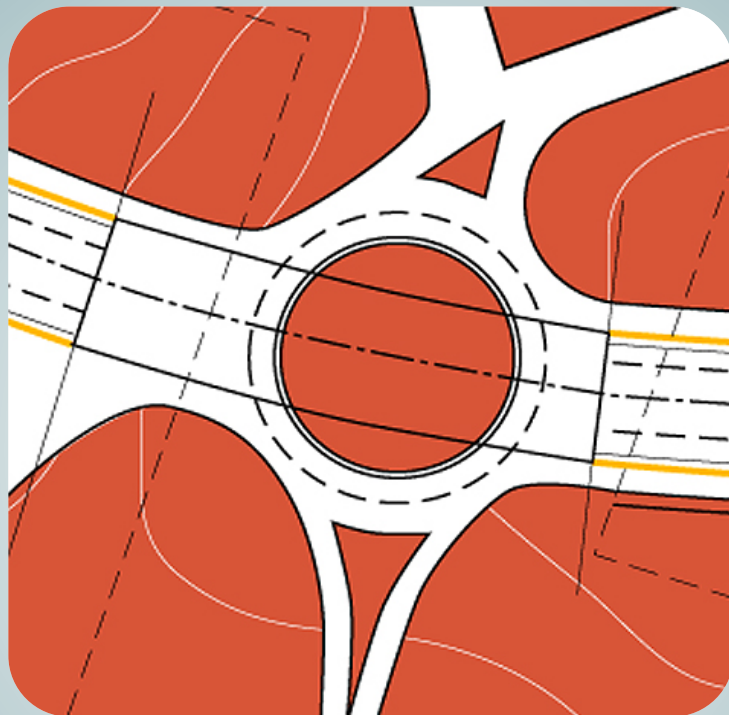


# Workshop on Projects

## Week 6. Activity Lecture Week 5&6 Script



**César Otero González**

**Valentín Gómez Jáuregui**

**Cristina Manchado del Val**

Department of Geographical Engineering and  
Graphic Expression Techniques

This work is published under a License:

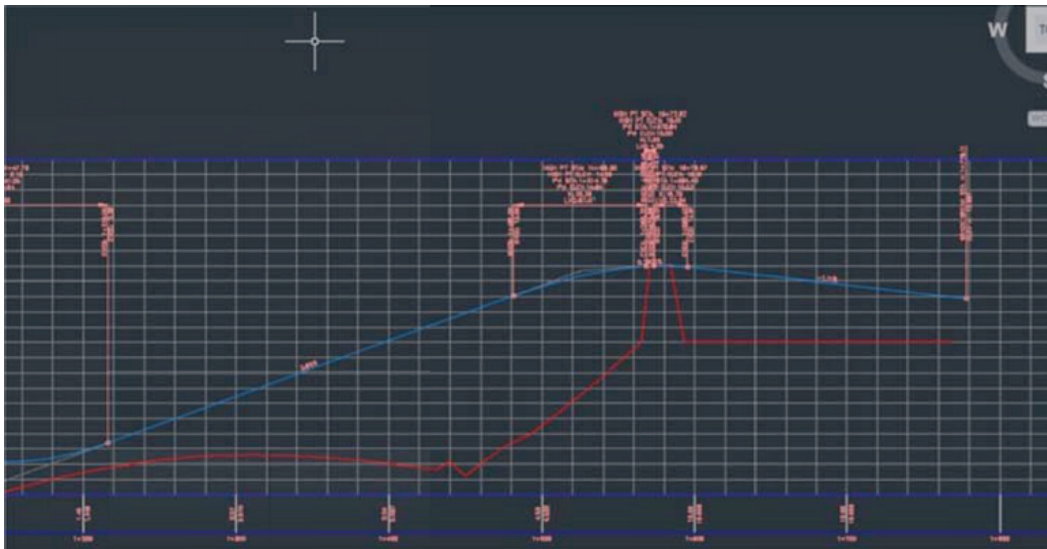
[Creative Commons BY-NC-SA 4.0](https://creativecommons.org/licenses/by-nc-sa/4.0/)

**(FRIDAY WEEK 6)**

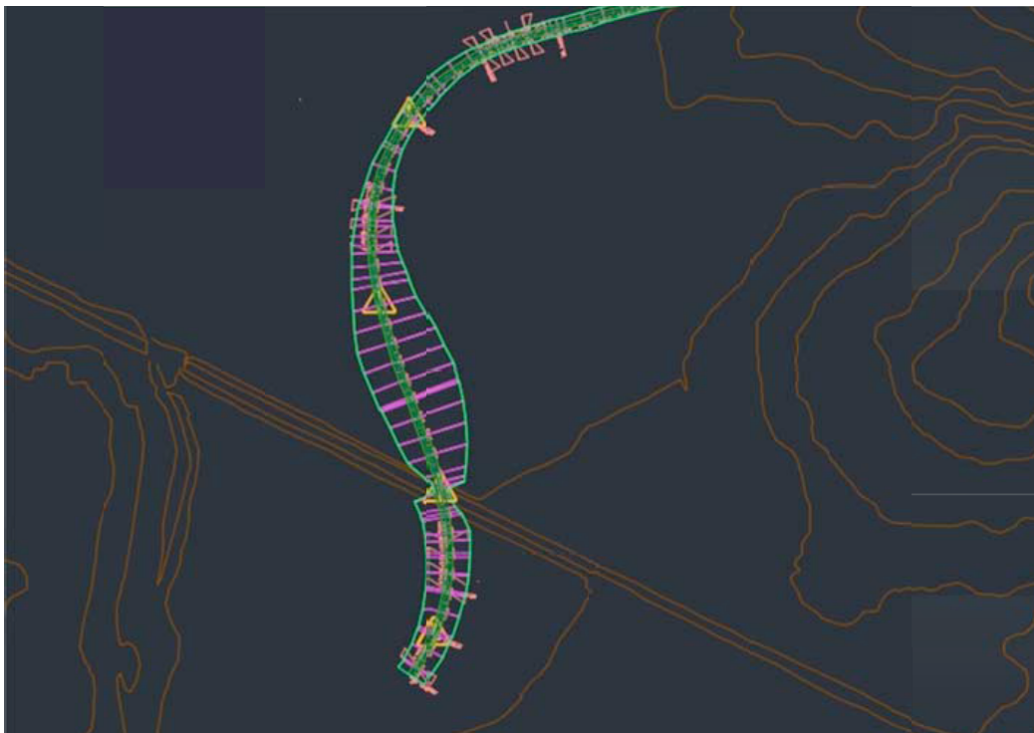
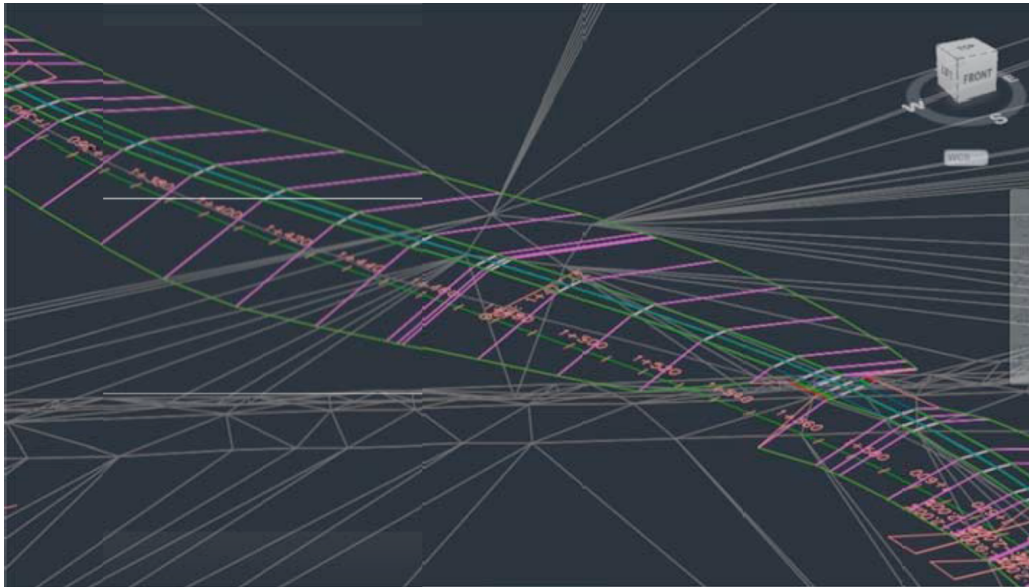
**5. CORRIDOR**

You created a corridor in the last class. You used an assembly having just a lane and a cut-fill-slope subassemblies by each side of the road. This is right, but not enough. Fortunately, this opens the possibility of analyzing some technical details in your designs. It is likely that:

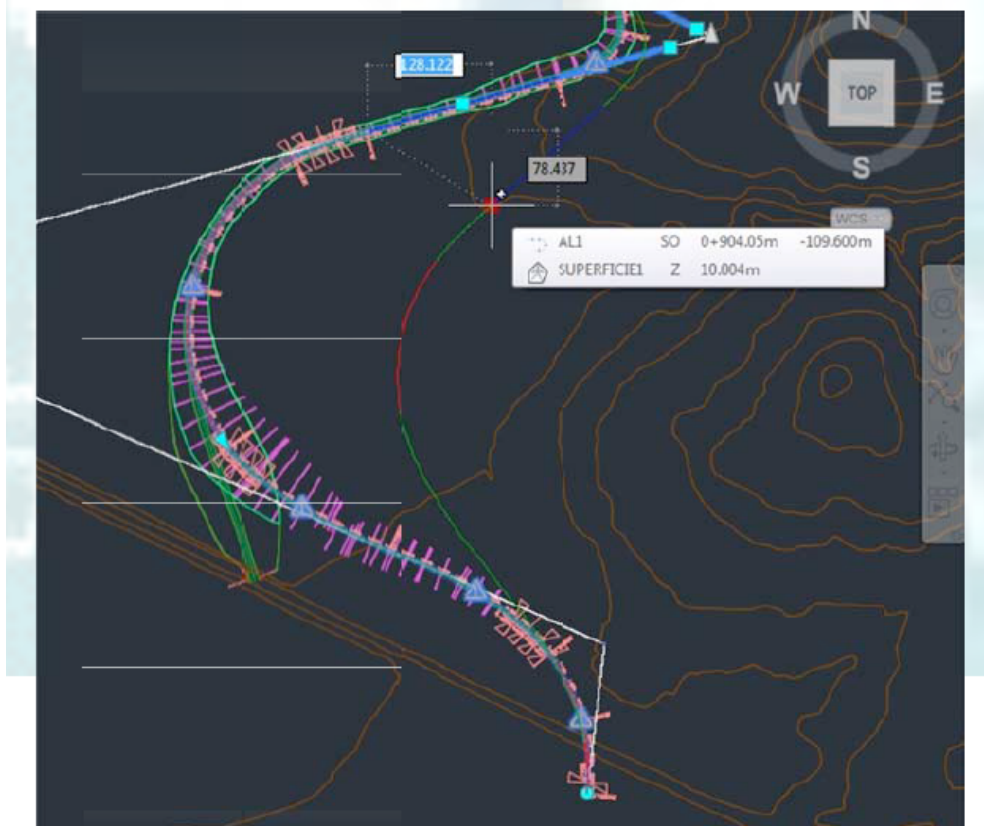
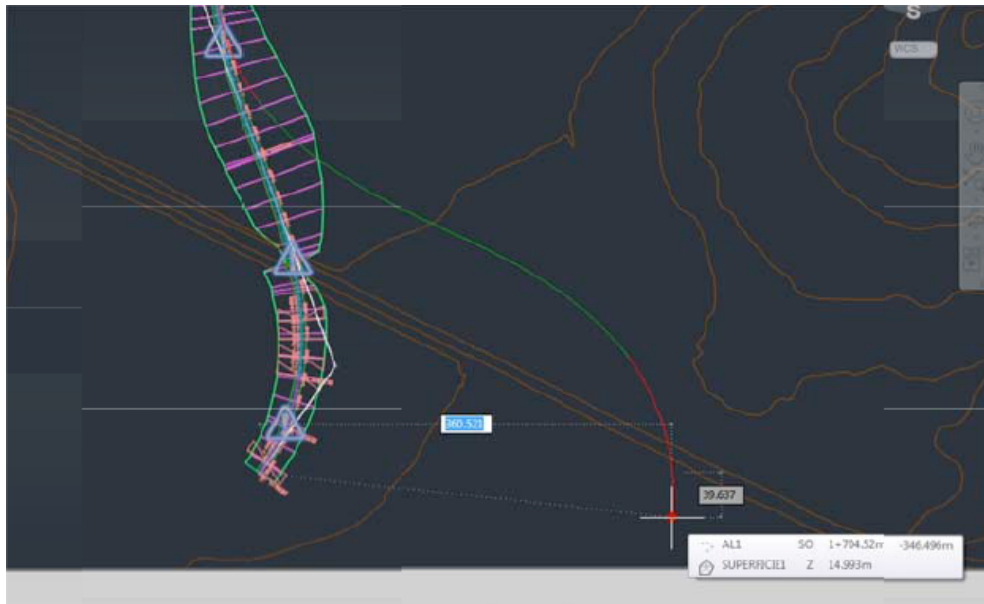
- 1) A potential intersection with another road has passed unnoticed for you. If so, remember that the profile layout must take account of this circumstance.



- 2) This constraint on the profile layout produces a huge difference between the height of the new road's grade and the height of the terrain. That would lead to unacceptable excavation works.

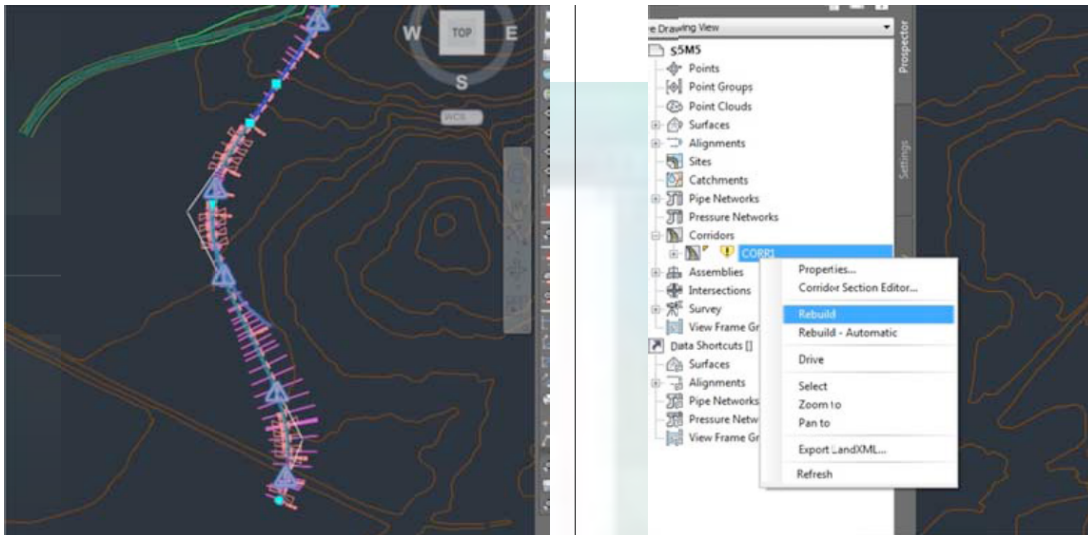


- 3) The alignment of the road is still editable; try to move it from some of its pickpoints and drag it to the East...

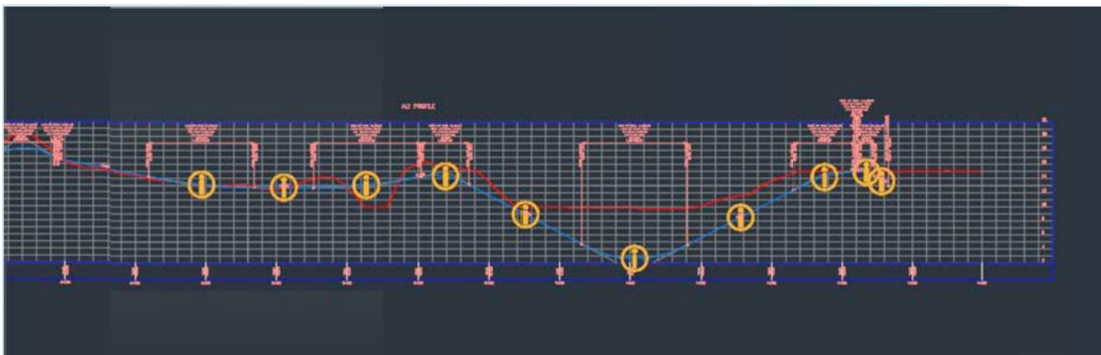




4) That makes it necessary to rebuild the corridor...



5) ... so that the corridor model is calculated again. Not everything is fine, because the profile layout needs to be redefined (it is not automatically adapted by rebuilding operations: it would be simply impossible).



Week 5&6. ALIGNMENTS AND PROFILES LAYOUT. SUPERELEVATIONS.  
ASSEMBLIES. CORRIDOR

---

**PROPOSAL: improve the design of your initial corridor, combining the DOF available in the alignment and in the profile layout. Try to minimize the movement of soil.**

**REMARK: if you prefer to work with the original design used for making the figures of the previous pages, you can download it from AULA VIRTUAL, week, folder DWG.**

**SUBMISSION FOR WEEK 6:**

- 1. YOUR RESULT FOR THE PROPOSAL OF SECTION 5.**
- 2. THE PROPOSAL OF SECTION 4, IF YOU DIDN'T SEND IT YET.**