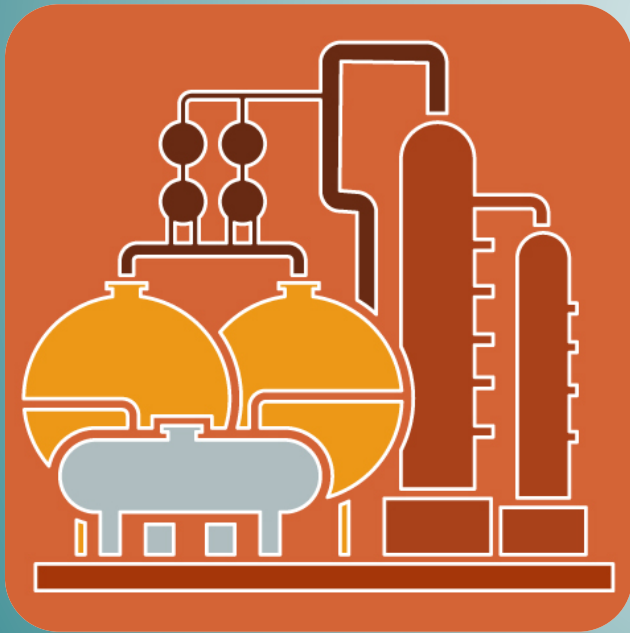


# Chemical Process Design / Diseño de Procesos Químicos

## Memo II. Rubric Memo II



**Javier R. Viguri Fuente**  
**Eva Cifrian Bemposta**

Department of Chemistry and Process and Resource Engineering  
GER Green Engineering and Resources Research Group

Este tema se publica bajo Licencia:  
[Creative Commons BY-NC-SA 4.0](https://creativecommons.org/licenses/by-nc-sa/4.0/)

## Memo 2 Rubric for Evaluation (Summary)

### DESCRIPTIVE SCALE OF EVALUATION or RUBRIC of the MEMO 2

<div style="text-align: center;">MARK</div> <div style="text-align: center;">ITEM</div>	<div style="text-align: center;"><i>A</i></div> <div style="text-align: center;"><i>Outstanding performance with only minor errors</i></div>	<div style="text-align: center;"><i>B - C</i></div> <div style="text-align: center;"><i>above the average standard but with some errors - generally sound work with a number of notable errors</i></div>	<div style="text-align: center;"><i>D - E</i></div> <div style="text-align: center;"><i>fair but with significant shortcomings - performance meets the minimum criteria</i></div>	<div style="text-align: center;"><i>F</i></div> <div style="text-align: center;"><i>Fail - some more/considerable work required before the credit can be awarded</i></div>
<b>Relationship PFD vs. Mass &amp; Energy balances</b>	<b>Makes sense. No errors in equipment. Flowsheet symbols drawn correctly and used consistently. Mass and energy is conserved, Relationship PFD vs. quantitative Table. Argumentation.</b>			
<b>Calculations</b>	<b>Complete calculations. Assumptions, description procedure, data clearly organized.</b>			
<b>Scope of the results</b>	<b>All requested results are shown: T, P, Component flow, total flow, phase (liquid, vapor, or vapor fraction if two-phase).</b>			
<b>Appendix. Calculations for units and basic calculations</b>	<b>Calculations for units and basic calculations. Traceability.</b>			
<b>Format</b>	<b>Spelling, grammar, punctuation. Assumptions, description procedure, data clearly organized. References.</b>			